

# The Alaskan Philatelist

The Journal of the Alaska Collectors Club • American Philatelic Society Affiliate No. 218



**Volume 39, No. 4 • Whole No. 208**  
**4th Quarter, 2003 • Pages 84-103**

## *Inside this issue...*

Want Ads .....	page 86
Secretary/Treasurer's Report.....	page 87
President's Message .....	page 87
New Postmarks .....	page 88
New Covers .....	page 89
B-r-r-ief Notes.....	page 90
Search for Polar Covers .....	page 90
Member Questionnaire .....	page 91
Member Spotlight.....	page 92
Ft. Wrangel EKU?.....	page 93
Nome Cancel Forged by Helbock? .....	page 95
Auction .....	pages 96-104
Auction Bid Sheet .....	page 103

# The Alaskan Philatelist

The Journal of the Alaska Collectors Club

ISSN #1096-5963

## OFFICERS

President ..... Eric Knapp  
Vice-President ..... Warner May  
Secretary/Treasurer ..... David Schwantes  
Director ..... Seely Hall, Jr.  
Director ..... Caye Carufel  
Director ..... Angela Watson  
Director ..... Jim Zuelow

All Alaska Collectors Club business, except editorial matters for this journal, should be directed to the Secretary/Treasurer:

David Schwantes  
8148 E. Fourth Avenue  
Anchorage, AK 99504

Editorial Matters should be directed to the Editor:

Eric Knapp  
4201 Folker St., Unit C102  
Anchorage, AK 99508  
E-Mail Address: [eknapp@gci.com](mailto:eknapp@gci.com)

Membership information and sample issues of this journal are available from the Secretary/Treasurer. Price of a sample issue is \$2.00 (stamps OK). Membership levels are as follows:

Regular Membership ..... \$15.00  
Contributing Membership ..... \$20.00  
Sustaining Membership ..... \$30.00 (or more)  
Overseas Membership ..... \$5.00 additional

The Alaskan Philatelist is published four times a year by the Alaska Collectors Club, a society dedicated to developing a wider interest in the study and preservation of Alaska's Postal History. Submissions for publication are always welcome.

Permission for reproduction in whole or in part is granted to other philatelic organizations for internal non-profit use provided that credit is given to The Alaskan Philatelist and the authors of the reproduced material. A copy of the publication in which material is reprinted is requested.

Opinions expressed here are solely those of the authors, and do not necessarily represent those of the ACC, its officers or members.

© 2003 The Alaska Collector's Club

## SUSTAINING MEMBERS—2003

Anchorage Philatelic Society	Norman Andersen
Debby Baker	John J. Beirne
Dr. Steven J. Berlin	Walt Bielinski
Caye Carufel	Ronald Chaikin
Harold Ford	Gastineau Philatelic Society
PerRavnsborg Gjertsen	Fern Grumbine
George Hall	Seely Hall, Jr.
Stuart Hall	Richard Head
Duane Heverling	Edward Kerr, II
Eric Knapp	Evalie Logan
Michael Mawhiney	Warner May
David McCord	Gary Phillips
John Roberts	Julius Rockwell, Jr.
David Schwantes	Wayne Selmer
Michael Senta, M.D.	Terry Shaw
Bea Shepard	Ken Simon
Robert Spaugy	Ted Swem
Dirk van Gelderen	Angela Watson
Gary Weiss, M.D.	Jim Zuelow

## TABLE OF CONTENTS

Want Ads .....	page 86
Secretary/Treasurer's Report.....	page 87
President's Message .....	page 87
New Postmarks .....	page 88
New Covers .....	page 89
B-r-r-ief Notes.....	page 90
Search for Polar Covers .....	page 90
Member Questionnaire .....	page 91
Member Spotlight.....	page 92
Ft. Wrangel EKU?.....	page 93
Nome Cancel Forged by Helbock? .....	page 95
Auction .....	pages 96–104
Auction Bid Sheet .....	page 103

## AWARDS

Colopex 2000—Silver-Bronze  
Colopex 2002—Silver-Bronze  
STaMpsHOW 03—Silver-Bronze





### **HELP WANTED**

I am looking for information about the Anchorage Contract Station 11. I never found anything about it and I do have the numbers 10 and 12 and the existence of Number 11 is then logical. Dirk van Gelderen, Voorkade 74, 2771 ZB Boskoop, Netherlands. Email [c.esveld@tip.nl](mailto:c.esveld@tip.nl).

### **WANTED**

Any old postal cards or covers from the Chitna, McCarthy, Kennecott area, 1890 - 1950. Please send list to: Thomas Kinzer, P.O. Box 107, Chitna, AK 99566-0107.

### **HELP WANTED**

I am looking for mint and used postcards depicting ALASKA LIGHTHOUSES. Russell Bartlett, 5 Saint Clare Street, Braintree, MA 02184-8239.

### **HELP WANTED**

We are looking for covers and other information on Wells Fargo & Company in Alaska during the 19<sup>th</sup> and early 20<sup>th</sup> century. We are specifically looking for any information on the location and history of the various offices in Alaska. George Hall, 13124 Stephenson, Anchorage, AK 99515.

### **WANTED**

Any era postal cards (government preprinted stamps, not picture) used in Alaska. No philatelic, please. Don Glickstein, 1300 University St. #9G, Seattle, WA 98101. Email: [glickwolf@earthlink.net](mailto:glickwolf@earthlink.net).

### **WANTED**

Censored civilian mail from Alaska and Western Canada from World War II. Eric Knapp, 4201 Folker Street, Unit C102, Anchorage, AK 99508. Email: [eknapp@gci.com](mailto:eknapp@gci.com).

## **TAP Deadlines**

<b>ISSUE</b>	<b>DEADLINE</b>
<b>1st Quarter .....</b>	<b>February 1</b>
<b>2nd Quarter .....</b>	<b>May 1</b>
<b>3rd Quarter .....</b>	<b>August 1</b>
<b>4th Quarter .....</b>	<b>November 1</b>

## **Alaska Philatelic Cover Catalog Volume 1 & 2**

Volume 2 of the Alaska Philatelic Cover Catalog, covering the Alaska Collectors Club, the Gastineau Philatelic Society and the Northern Lights Stamp Club is now available.

The catalog features illustrations of all major and minor covers issued by the three clubs.

The catalog is 8 ½ x 11 loose-leaf format punched for a three ring binder.

Prices:

Volume 2:

\$25.00

Volume 1, Revised Edition:

\$25.00

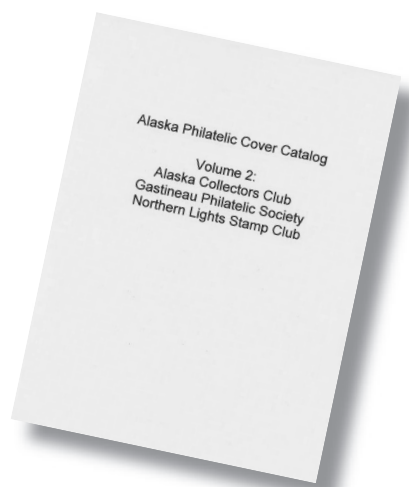
Original Volume 1 Update:

\$3.00

(All prices are postpaid)

For orders or more information, contact:

Eric Knapp  
4201 Folker St., Unit C102  
Anchorage, AK 99508



# Secretary/Treasurer's Report

by David Schwantes

Eight years ago, in 1996, I wrote my first secretary-treasurer's report to you, and today I am writing my last one. I did a little checking and found that over the past eight years we have added 55 new members to our organization. Of course, a number of past members have also disappeared. However, the club is going strong at this time, and the treasury, after being almost down to zero a few years ago, is very healthy now. I have enjoyed holding this office, and doing the work involved with it, and I hope whoever takes my place finds it just as rewarding.

I would like to say that this is a great club and it meets the need of many of our members. However, I'm sure we are not meeting all of your needs, and the only way we can do that is for you to let us know. What are we missing in the newsletter? What other things do you want to see, and can you help with some of these by writing an article? There are so many different stories and collections out there that others would like to know about. Only YOU can make them available to our members. Do your part—write an article!!!

Since my last report, I have been busy with a number of stamp projects. I did exhibit and attend MILCOPEX in Milwaukee in September and had a very enjoyable time. I was able to pick up quite a few Alaskan items, and enjoyed exhibiting outside of Alaska for the first time. Back here in Anchorage, I worked on a cover for the 50th anniversary of the Ted Stevens Anchorage International Airport, and completed a cover project honoring the centennial of both Seward and Fairbanks. Those covers appear elsewhere in this newsletter. Eric and I have also been working on the "Sustaining Member" cover, but you will have to wait a little longer to receive it. I do thank those of you who are sustaining members, and have been for a number of years. The series of "sustaining member covers" is quite interesting. This year's will be the fifteenth.

Included in this issue will be the membership renewal forms. Remember that some of you have already paid dues for 2004. Check the address label on this newsletter to see if you are already paid up. If the label reads 2004, you do not need to return the form. Also included will be the ballot for the election. They too will be returned to me, so you can mail them together if you want.

Winter has arrived here in Alaska. We have had a couple of good snowfalls already and the skiers, dog mushers, and snowmobilers are all happy. I would like to say, that I hope you each had a very Happy Thanksgiving, and that the Holiday Season is a great one for each of you and the New Year brings you all joy, happiness, and success. Keep the hobby going, help the club be successful and enjoy whatever you are doing.

# President's Message

by Eric Knapp

The year is coming to a close faster than I can imagine. I don't know if I am the only one who thinks this but time seems to be going a lot faster. My personal theory has been that someone removed a couple of hours from each day without telling us.

Time comes to mind because this is election time for the club. As I write this, I am trying to nail down the last nominee for the slate. If I get it done by the time TAP is ready to mail the election packet will be included. If I don't get it together it will be in the next issue.

Time is change I guess. We move forward, our interests and abilities change and evolve as we travel. As an example, I work in a technological field and I have decided to stop being amazed at how fast the technology is moving and just accept that it is moving.

The same thing can be said about our collecting habits. I seem to have developed an interest in war ration material over the last couple of years. I don't think it is truly "philatelic" but it is historic and kind of fun. It's amazing what still exists out there.

I guess my point is don't be afraid to let your collections wander where they may. You never know what you might find what you might like or what new unknown thing you might discover.

"Gold Nuggets" makes it debut in this issue. They are pieces of information about the Gold Rush of the 19th century and will cover information in no particular order, but they promise to be interesting and entertaining. If have any nuggets of information you would like to share, please send them in.

## Articles

Well, we do still need articles for future issues of TAP. Please, take a look at your collection. I would almost bet money that you have something there worth writing about.

*Until Next Year.*



We have had two new members this last quarter. They are:

#674 Carl R. Ditsch  
26987 New Lawrence Drive  
Leavenworth, KS 66048-8523

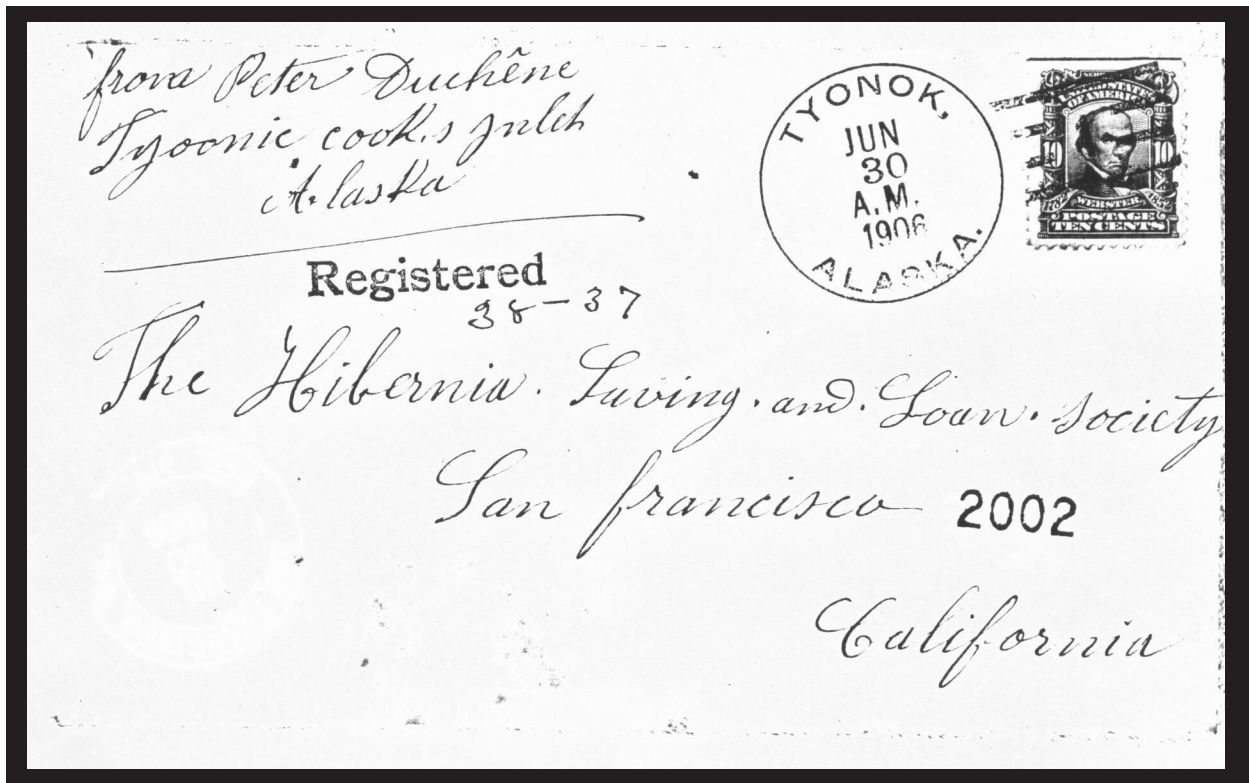
#675 Bettie Sleep  
3161 Roden Lane  
Fairbanks, AK 99709-2644

*Welcome!*



# New Cancel Types Discovered

reported by Steve Sims



## Item 1

Type 1 Doane #1 Cancel. Helbock didn't have a good example to copy. New Earliest known use. Note spelling, TYONQK, the spelling form 1905 to 1908.

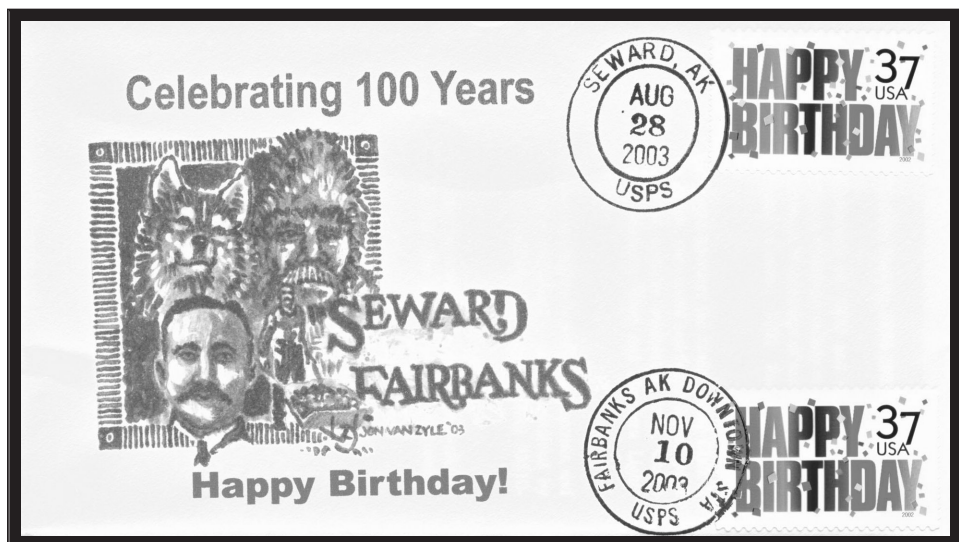


## Item 2

A rare flag cancel used on Holy Cross Day from Holy Cross, AK. Flag cancel was part of the celebration of the Alaska Purchase Centennial.

# New Covers Reported

The Anchorage Philatelic Society has issued the following two covers: They are available for \$3.00 each plus a SASE from: Anchorage Philatelic Society, P.O. Box 10-2214, Anchorage, AK 99510-2214.



Cover 1, 50<sup>th</sup> Anniversary of the Ted Stevens Anchorage International Airport.

Cover 2, 100<sup>th</sup> Anniversary of the founding of Seward and Fairbanks.



## Back Issues of TAP

1959 - 1973 Computer scanned and edited copies  
 1976 - 1984 quality photocopies  
 1984 - 2001 originals and quality photocopies

\$10.00 for six issues or calendar year.  
 \$2.00 for single issues  
 plus shipping

Shipping charges: \$2.00 for first 6 issues, \$1.00 for each additional six issues or portion thereafter, \$5.00 maximum on any order. Limited quantities available. Refunds for those not available. Donations of back issues appreciated.



# Looking for Polar First Flight Covers

Dear Mr. Schwantes,

I kindly ask you to include in the next The Alaskan Philatelist my following message for my collection "Scandinavian Polar Flight Firsts" as follows:

I am asking fellow members for assistance for my collection "Scandinavian Polar Flight Firsts" regarding special items in connection with the North-Atlantic flight of Thor SOLBERG 1935 New York-Canada-Greenland-Iceland-Faeroes-Bergen (Norway) in the Loening Amphibian "Leiv Eiriksson;"

- On May 20, 1934 Thor Solberg's wife, Ingrid, christened the Loening Amphibian "Leiv Eiriksson" at Floyd Bennett Airport, New York.  
From this event there exist covers, stamped "BROOKLYN, N.Y. 10/ MAY 20/8.30 PM I 1934", with information text and signed by Ingrid Solberg.
- Covers/cards posted and I or stamped Harbour St. Pierre, Covers I cards posted and/or stamped Bildudalur (Iceland), Covers/cards posted and/or stamped Thorshavn (Faeroes), Are covers I cards from these three stages known to you, then please send me photo copies of both sides of any of these three items, if possible or where to get such.
- Covers/cards from Julianehaab (Greenland) with Greenland-package stamps with machine-printed text on them "Flyvepost Gronland-Island-Norge-Danmark /Thor Solberg" and Danish-postage stamped in Copenhagen on arrival there.
- Mail from later Thor Solberg flights north of the Arctic Circle after the 1935-flight.

I shall indeed be interested in purchasing all such Solberg-covers/cards, so please contact me and make me an offer.

I hope of the assistance of fellow members of ASPP for my collection. Relevant information will also be used for a special study on the Thor Solberg flights.

Per RAVNSBORG-GJERTSEN,  
Postfach 2230,  
DE-26362 WILHELMSHAVEN,  
Germany  
Tel. & Fax .49.4423.2393

Thank you in advance for your assistance.

# B-r-r-r-ief Notes



## Dues Reminder

Included in this issue will be the membership renewal forms. Remember that some of you have already paid dues for 2004. Check the address label on this newsletter to see if you are already paid up. If the label reads 2004, you do not need to return the form. Also included will be the ballot for the election. They too will be returned to me, so you can mail them together if you want.

## Club Election

If everything got pulled together, you will find an election packet enclosed with this issue. Please follow the instructions enclosed and please vote. If it did not, then the election packet will be in the next issue. Whichever happens, please take time to vote. Thank you.

## *"Gold Nugget"*

*In 1897, America was suffering through a grim depression triggered by the Panic of 1893. Money was tight and gold was scarce when a group of miners walked off the ship Excelsior in San Francisco harbor on July 15 with almost \$200,000 of gold in their luggage. Two days later, a second ship, the Portland, docked at Seattle carrying more newly-rich miners and over \$1.5 million in gold dust and nuggets. Word of the strike spread quickly, igniting a gold rush stampede.*



# Member Questionnaire for Newsletter Article

---

We're going to try a different tack with this feature. Here is the questionnaire, so now everyone can fill it out and send it in for publication in the newsletter. Please take a few minutes and send this in. We'd love to feature all our members in the newsletter. This is an especially important feature in a club with no regularly scheduled meetings. We will need three things from you:

- 1) this sheet with you filled in answers (add other sheets as necessary),
- 2) a recent photo of you (prefer clear, well- focused and good contrast photos), and
- 3) a color photocopy of your favorite piece of Alaskan Postal History.

Please drop all those things in the mail back to me at: Angela Watson • P.O. Box 3262 • San Diego, CA 92162. Thanks!

1. Please list your name place of residence and age: \_\_\_\_\_

2. What is your occupation? \_\_\_\_\_

3. How did you become a stamp collector? \_\_\_\_\_

\_\_\_\_\_  
\_\_\_\_\_  
\_\_\_\_\_

4. What about Alaska Philately interests you the most? \_\_\_\_\_

\_\_\_\_\_  
\_\_\_\_\_

5. What specialties within Alaska Philately do you collect? \_\_\_\_\_

\_\_\_\_\_  
\_\_\_\_\_

6. What other countries or areas do you collect? \_\_\_\_\_

\_\_\_\_\_  
\_\_\_\_\_

7. What other philatelic study groups or organizations are you a member of? \_\_\_\_\_

\_\_\_\_\_  
\_\_\_\_\_

8. Tell us about your favorite piece of Alaskan Postal History (include the color copy so we can scan and add to your article).

\_\_\_\_\_  
\_\_\_\_\_  
\_\_\_\_\_

9. Anything else you want to tell us about yourself (other hobbies, interests, favorite curse word, etc?)

\_\_\_\_\_  
\_\_\_\_\_  
\_\_\_\_\_



# Member Spotlight: Jim Ruotsala

by Angela Watson

## Name, Place of Residence and Age:

*My name is Jim Ruotsala, I live in Juneau, Alaska and am 69 years old.*

## What is your occupation?

*I am retired military. I served six years in the U.S. Navy (from 1951-57), then the U.S. Army (from 1958-64) and finally, the U.S. Army Reserve (1984-1994). I commanded the First Civil Support Battalion of the Alaska State Defense Force in Juneau for six years and retired as a Lt. Colonel in 1998.*

## How did you become a stamp collector?

*The day the Japanese bombed Pearl Harbor in 1941, I was only seven years old. I was walking in Douglas, Alaska and I saw a man throw away a bunch of stamps. I picked them and my mother helped me dry them off. This was my start as a stamp collector.*

*When my father saw that I had an interest in stamps, he brought home stamps from his work, the Alaska-Juneau Gold Mine. Most of the workers were Filipino, so mostly Philippine and Japanese stamps got me started and I have been collecting ever since.*

## What about Alaska Philately interests you the most?

*I am very interested in all aspects of Alaskan Collecting and it keeps me current on stamp items from other cities besides Juneau.*

## What specialties within Alaska Philately do you collect?

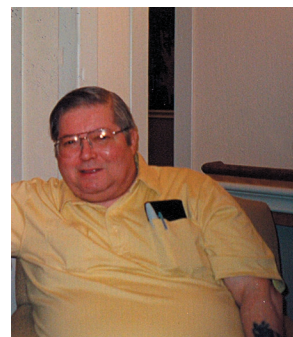
*Early and Specialty Covers on Alaska form the bulk of specialty collection.*

## What other countries or areas do you collect?

*I specialize in U.S., Canada, Russia and Japan, and I also am one of the dwindling number of General Worldwide collectors still around.*

## What other philatelic study groups or organizations are you currently a member of?

*I am a member of the American Philatelic Society, the Naval Cover Collector's Society and the Japanese Philatelic Society.*



***Club members want  
to hear YOUR story  
(don't be shy!)***

***Take the form on page 91 and  
fill it out. Send it along with  
a photo and a color copy of  
your favorite philatelic piece  
to Angela Watson, P.O. Box  
3262, San Diego, CA 92163.***

***Do it today!***

## Tell us about your favorite piece of Alaskan Postal History.

*I don't really have anything to offer up on this question at this point.*

## Anything else you want to tell us about yourself?

*I am considered an Alaskan Aviation Historian and have written two books in print, titled, "Alaskan Wings," and "Pilots of the Panhandle."*

# A New EKU for Fort Wrangel?

## Could This Be a Cancellation #3?

by Hal Vogel

Helbock (Postmarks of Territorial Alaska, Third Revised Edition, 1986) shows the third Fort Wrangel cancellation (actually the second postmark, since the first cancellation was of the manuscript variety) as being used from 2 April 1877 to 7 November 1881. The one before (identified as '2') is listed as only being used at the Army post for about 18-months from 11 March 1875 to 9 December 1876. Figure 1 is a copy of the page showing this information in Helbock.

Fort Wrangel postmarks #2, 3 and 4 clearly are different and distinguishable, even when they might appear partially, as on figure 2. Figure 3 is 26 mm in diameter and has an abbreviated "Alas." taking up far less space at the bottom of its dial. Postmark #2 is significantly larger and postmark 4 has "Alaska" completely spelled with very little space between it and the other words adjacent to it on its dial.

Figure 2 is inward mail from Fort Ripley, MN, in May of an unstated year in the 1870's to Captain S(tephen) P. Jocelyn, c/o Hqts. Dept. of the Columbia, Portland, Or-

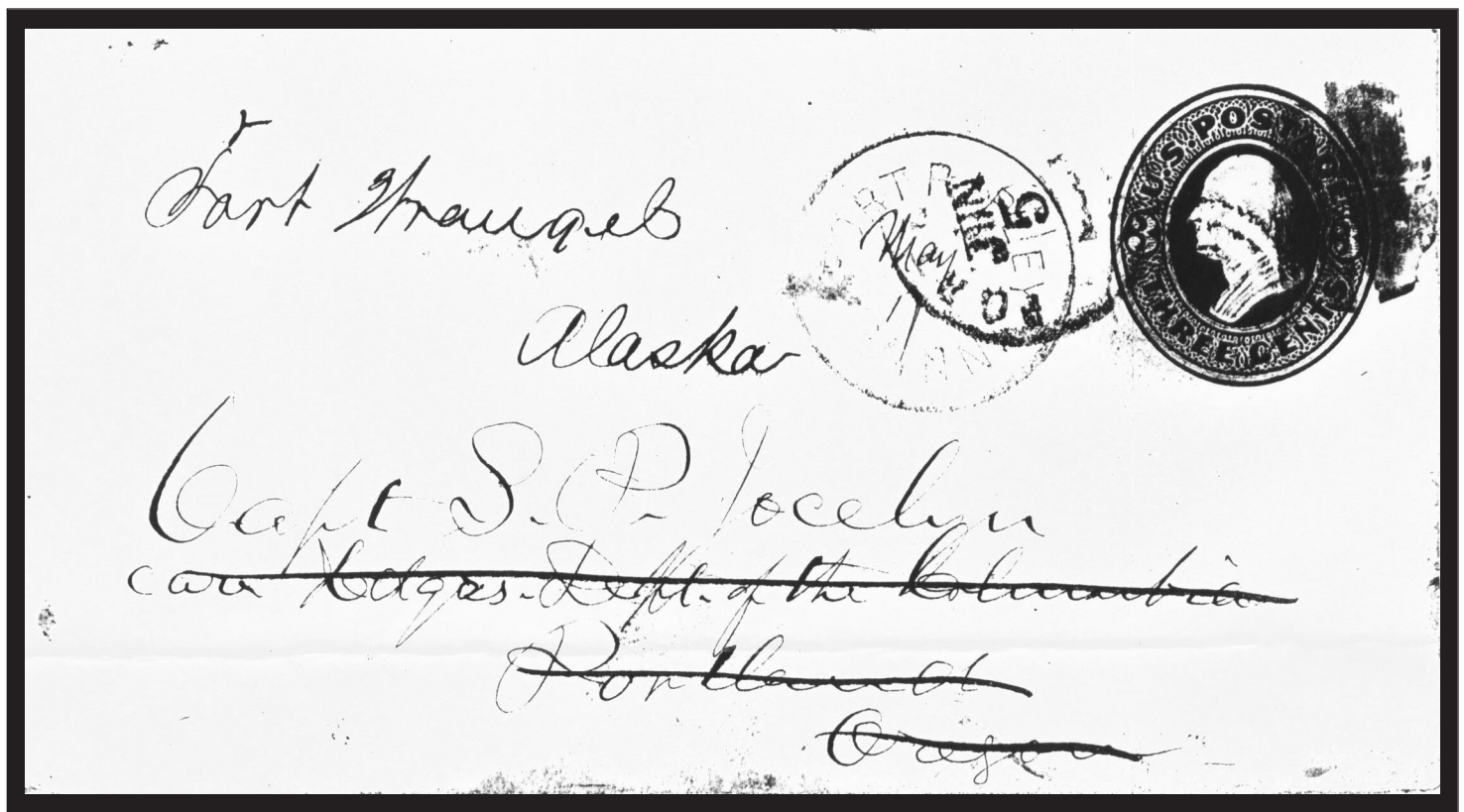
egon. The 3-cent embossed envelope subsequently was forwarded to 'Fort Wrangel / Alaska,' where it received a partial cancellation on 5 June.

Lyman L. Woodman (Duty Station Northwest, volume 1, page 86-87) cites Old Army Records in the National Archives as indicating that Captain S.P. Jocelyn (an apparent typo has his middle initial as "B") commanding Company B, 21st Infantry at Fort Wrangel from August 1875 to his (and his company's) departure for the Indian Wars in the USA Northwest, 9 November 1876.

That would mean the Fort Wrangel receiving mark either was applied in 1875 or 1876. The writer could have just missed him as he rotated to his Alaska assignment in mid-1875 (this mail arriving to await him at Fort Wrangel) or (more likely) it was mailed a year later -- a few months before he would return to the States at the end of 1876.

This would suggest that the receiving Fort Wrangel cancellation had to have been a type 2. However, even in its partial state, the Fort Wrangel receiving mark can be seen as being 26mm in diameter and of a type that had an

*continued on page 94*



# Fort Wrangel EKU?

from page 93

abbreviated "Alas." at the bottom of its dial. According to Helbock (and earlier comments in Cavagnol [Postmarked Alaska, page 89]), type 3 Fort Wrangel cancellations (the second postmark type) did not begin use until the Spring of 1877. However, the Fort Wrangel receiving strike in figure 2 clearly is NOT the larger type 2. It has the hallmarks of a type 3.

Even in its nearly indecipherable state, the Fort Wrangel rs on figure 2 has a noticeable spatial gap between the blur at the bottom (where "ALAS." would be) and the beginning of "Fort" at the dial's 9 o'clock position. That would clearly distinguish it as NOT being a type 4. Numerous other differences also would eliminate it as being a type 2. The Fort Wrangel partial cancellation

on figure 2, that was received in Alaska either in 1875 or (most probably) 1876 is a type 3 -- even though several references earlier had recorded no type 3's in use before 2 April 1877.

Most certainly the type 3 device was in use earlier than the references have listed and at least in June 1876 (and possibly earlier). Why could not figure 2 have been posted during the time previously recorded for type 3's period? Official Army records as noted by Woodman have Captain Jocelyn fighting Nez Perce Indians in Idaho Territory in 1877. The Department of Columbia in Oregon would have known that and not forwarded his mail to Alaska, from where the Army already had reposted him.

## FORT WRANGEL

First occupied by Russians as a stockade to prevent encroachment by Hudson's Bay Company in 1834. Later leased to British as Fort Stikine. Americans established Fort Wrangel in 1867 as military post, but removed troops in 1877. Community served as supply point for Stikine River gold region, and changed name to Wrangell in 1902. Population in 1890 was 316.

### FORT WRANGEL (1869-1902)

1.	9	M	31 Jul 1870		
2.	9	C1F13N1B30	11 Mar 1875	9 Dec 1876	
3.	8	C1CA1BBR26	2 Apr 1877	7 Nov 1881	Target (1)
4.	8	C1AN3BBR26	17 Nov 1881	14 Apr 1882?	Target
5.	8	C21AN1RRB28	19 Oct 1882	12 May 1885	Target (1)
6.	8	C1AN2BBR27	27 Jun 1886		Cork (1)
7.	7	C21AN1RRB31	16 Sep 1886	7 Dec 1889	Target
8.	7	C1AN1B28.5	24 Nov 1891	10 Feb 1894	Star-in-circle
9.	6	C1AN1BBR28	16 Jul 1896	8 Nov 1898	Target
10.	6	C1AN1B29	21 Jun 1898	1 Sep 1899	Cork (1)
11.	5	C1AT1B28.5	3 Jun 1900	21 Dec 1901	9-bar grid

*Fort Wrangel A.P. {  
July 3 42 1870}*

1



2



3



4



5



6



7



8



9



10



11



(1) Name of office spelled "FORT WRANGLE".



# Tracing Limitation, Forgery or New Postmark Type?

by Jim Zuelow

Alaska postal history collectors are indeed fortunate that Dr. Richard Helbock compiled and published the various postmark guides we use on a regular basis. In the introduction to the third edition of *Postmarks of Territorial Alaska*, he explains that not all of the postmark illustrations in the publications come from photocopies, but instead are based on tracings that are sometimes of limited quality. Knowing whether a particular postmark is a tracing variation, or if it is an example of a new type and hopefully not a forgery is not always easy to determine.

For example, Helbock doesn't state if his example of Nome Number 1 comes from a photocopy or a tracing (see Figure 1). The postmark on my one and only Nome Number 1 cover differs from Helbock's illustration in several respects (see Figure 2). Helbock's postmark shows trident-like features before and after the words "NOME,

ALASKA", whereas my cover clearly shows a floral-like design before "NOME". Helbock's illustration shows more or less straight bar pieces in the "E" of "NOME", and the "A's" of "ALASKA", whereas my cover clearly shows down to up slanted bar pieces. Finally, there is no evidence of a comma between NOME and ALASKA on my cover.

Unless I learn otherwise as a result of this brief article. I'm inclined to believe I have a tracing variation of Nome Number 1 instead of a new type or a forgery. In part, my opinion is based on the general condition of the cover, the fact that I obtained my cover from a reputable dealer (who offered to refund my purchase money if it was discovered to be a forgery), and because I believe other "Gorham" covers exist. I remain curious, however, as to origin of the cover and postmark Helbock used to illustrate Nome Number 1. Is Helbock's illustration a tracing of a forgery?



NOME, ALASKA

FIGURE 1

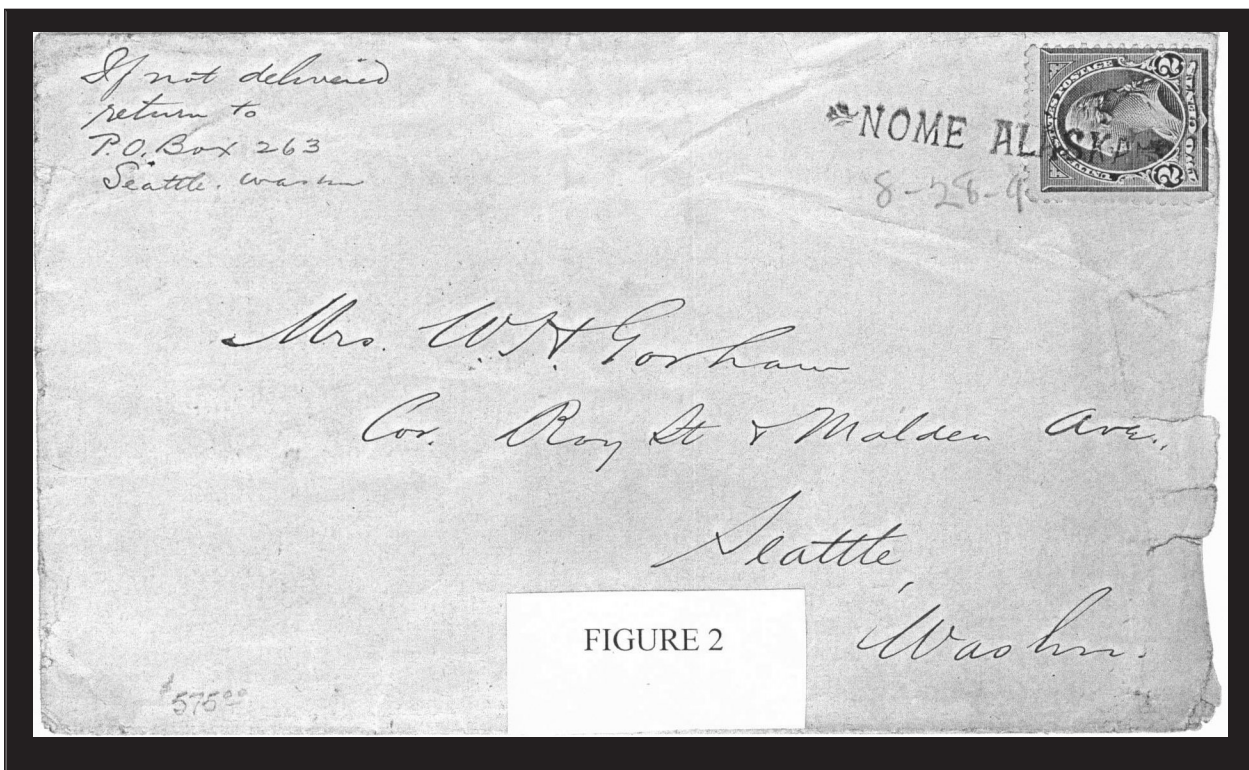


FIGURE 2



# AUCTION

**Closing Date:**  
**February 29, 2004**

Send bids to:

Terry Shaw, Unit # 1009, The Letterman Bldg., 2030 F. St. NW, Washington, DC 20006

Phone: (703) 605-5261 • days; (202) 466-7186 • evenings. E-mail: cgsarchxx@aol.com

Please bid in increments of 25 cents.

**Use Bid  
Sheet on  
Page 103!**

Abbreviations used:

BS = Back Stamp  
DCC = Double Circle Cancel  
EAMC = Emergency Airmail Cover  
FD = First Day  
FF = First Flight  
LD = Last Day  
NP = Nonphilatelic  
PO = Post Office  
T = Territorial postmark type from Helbock; 3rd. Ed.  
VF = Very Fine

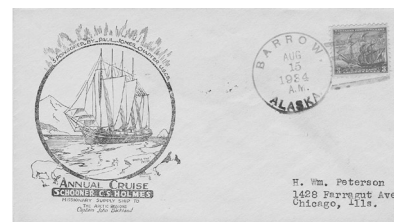
CC = Corner Card return address  
DPO = No Longer Active "Dead" Post Office  
4BC = Four Bar Cancel  
F = Fine  
II = Informative insert  
MC = Machine Cancel  
PC = Postcard  
PMS = Postmaster signed  
VG = Very Good  
R = Reserve Bid, only \$1.00 unless otherwise noted

**Please read carefully and ask for photo copies as desired (5 cents each + SASE), or ask for electronic images sent as JPEG files. Have fun, bid early and often, and please ask others to bid.**

**I AM IN DESPERATE NEED OF AUCTION MATERIAL!**

This auction features many small Alaskan village cancels for the Philatelist starting to build their collection of Alaskan territorial and statehood Postmarks as well as a few goodies (including ship cancels & APO's) for the more advanced collector. ENJOY!

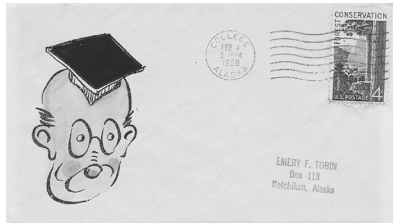
1. Akutan (9/26/58) T2. PMS. F.
2. Aleknagik (9/9/43) T1-purple Ink. EAMC – Censored! F. R = \$3.25.
3. Anchorage (2/20/54) 2<sup>nd</sup> APEX Cachet. VF. R = \$3.25.
4. Anchorage (2/24/57) T17. Special cachet, Scandinavian Airlines Around the World flight. Tokyo, Japan (2/26/57) BS. VF. R = \$3.50.
5. Anchorage (7/10/90) Special cancel & cachet for the city's first Post Office; cachet signed by design artist Byron Birdsall. VF. R = \$2.50
6. Anvik (6/1/16) T2. F. R = \$52.50.
7. Anvik, unused 1910 –1920 colorized postcard of the Post Office. F. R = \$3.25.
8. Anvik (5/18/53) T5. Plain postcard. F.
9. Arctic Village (5/13/59) 4BC. VF.
10. Baranof (4/1/60) 4BC, DPO. Government postal card. VF. R = \$1.50.
11. Barrow (8/15/34) T11, purple ink. Special polar bear – ship cachet for the annual cruise of the Schooner C.S. Holmes. VF. R = \$6.00.



**Lot 11**

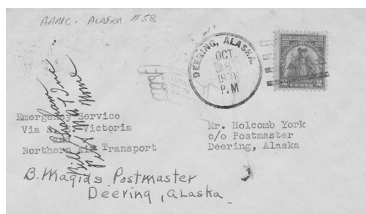
12. Barrow (8/10/60) 4BC. Cachet for Drift Station Bravo on Ice Island T-3. F.
13. Barrow (4/13/64) MC. Signed cachet for Ice Island Arlis III. F.
14. Barrow (10/16/67) 4BC. Two different cachets for Ice Island T-3 (2 covers). F.
15. Barrow (8/16/71) MC. "Top of the World" polar bear cachet for Coast Guard Air Cushon Vehicle ACV-03 Test Operations. F.
16. Bartlett (9/30/58) T2, DPO. Government postal card. F.
17. Beaver (1/16/36) T1. F. R = \$2.25.
18. Beaver (7/11/56) T2, purple ink. F.
19. Bettles (12/31/56) T3, DPO. Government postal card.
20. Boundary (12/3/53) T1, DPO. Plain postcard. F. R = \$2.25.
21. Buckland (1/10/62) 4BC. VF.
22. Chandler (11/9/33) T1. F. R = \$5.00.

23. Chatanika (1/2/59) 4BC – Last day as a territory cancel. Gov PC. F.
24. Chatanika (3/24/73) 4BC. Poker Flats Rocket Test, moose – rocket cachet. F.
25. Chena (6/2/14) T3. F. R = \$48.50.
26. Chenega (6/1/53) T1, DPO. Plain postcard. F.
27. Chicken (3/9/60) 4BC, some ink smear. Tobin hand-drawn Chicken cachet. F. R = \$3.50.
28. Chifornak (7/22/61) 4BC. First day of office cancel; PMS. VF.
29. Chugiak (8/1/47) T1. First day of office cachet. VF. R = \$1.75.
30. Circle (6/17/08) T2. Dawson greenhouse postcard. F. R = \$48.50.
31. Clam Gulch (9/27/58) T2. Government airmail postal card. VF.
32. Coal Creek (8/26/60) 4BC, DPO. Revalued Gov. PC. F.
33. College (2/4/59) MC. Hand-drawn Tobin cachet of a professor. F+. R = \$3.25.



**Lot 33**

34. Cooper Landing (5/10/51) T2. Plain postcard. F.
35. Cordova (12/11/89) 4BC. PMS. VF.
36. Cordova (7/31/91) 39<sup>th</sup> APEX cachet, II. VF. R = \$2.25.
37. Council (9/3/03) T1 as BS on cover from Washington State. Also a (8/18/03) Nome Rec'd. cancel and a Seattle (8/5/03) MC. VG-F. R = \$55.00.
38. Crooked Creek (11/28/36) T1 -- Stony River (12/14/36) T1, DPO. F. R = \$3.50.
39. Crooked Creek (11/8/40) T2 -- Fairbanks (11/8/40) T19 BS. EAMC cachet. F. R = \$3.25.
40. Curry (2/21/41) T2, DPO. Nonphilatelic. F. R = \$3.00.
41. Deering ((10/18/30) T4. Pilot signed (Bill Graham) Emergency Airmail to dispatch mail to the S.S. Victoria, last ship going south for the year. F. R = \$12.00.



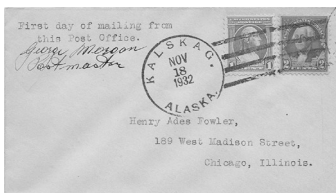
**Lot 41**

42. Douglas (9/12/09) T6 -- later than listed. Rare use of this "Rec'd." cancel as a sending postmark. Dogsled postcard. F. R = \$55.00.
43. Douglas (7/29/14) T7. Birthday postcard. VG-F. R = \$2.75.
44. Eek (3/19/64) 4BC. Nonphilatelic. F.
45. Ekwak (1/2/46) T1, DPO -- Clarks Point (2/4/46) T1, BS. EAMC cachet. VF. R = \$3.50.
46. Elfin Cove (4/8/53) T2. Nonphilatelic. VG-F.
47. Elim (6/27/53) T1. Plain postcard. F.
48. Emmonak (11/28/61) DCC, purple ink. VF.
49. Fairbanks (5/10/36) Gen. Del. Used as a receiving cancel on a nonphilatelic cover mailed from Minnesota. F. R = \$3.00.
50. Fairbanks (3/8/43) T15. Censored intra-Alaska mail. F. R = \$3.00.
51. Fairbanks (11/12/49) T18. Great Musher/Dog cachet. F. R = \$2.25.
52. Fairbanks (3/1/60) MC. FF cachet -- Seattle (3/1/60) BS. F. R = \$1.75.
53. Fairbanks (2/25/84) 4BC. Official cover & II, 1st running of the Yukon Quest dog sled race; signed by all of the Mushers! A rare race cover. VF. R = \$85.00.
54. Fairbanks (2/13/99) - Whitehorse, Yukon (2/24/99). Special cancel, cachet & II for Yukon Quest dog sled race. Cover carried & signed by Musher Jim Hendrick. VF. R = \$3.50.
55. Fairbanks, Steese Br. CPU (7/22/89) 4BC. PMS. F.
56. Fortuna Ledge (8/17/53) T4, swollen -- later than listed! Plain PC. F. R = \$1.75.
57. Franklin (10/9/40) T3, purple ink, DPO -- Jackwade (10/16/40) T4, DPO on cover face. EAMC cachet. F. R = \$5.00.
58. Galena (7/30/58) T3, light strike. PMS. F.
59. Gambell (9/16/49) T1. Plain postcard. F.
60. Girdwood (8/25/53) T3. Plain postcard. VF.
61. Glenallen (1/8/58) T1, DPO. Nonphilatelic. F.
62. Golovin (6/23/58) T6, DPO. F.
63. Grayling (11.23.63) 4BC. First day of operation cancel. VF.
64. Haines (8/22/07) T2. Super Dogsled team postcard with Alaskan Pioneers Pat Renwick & George Woodburn. F. R = \$70.00.



**Lot 64**

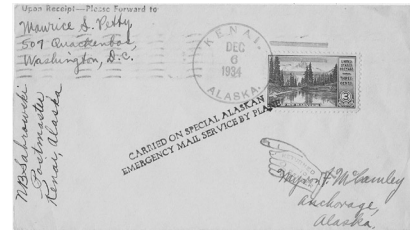
65. Haines (8/18/53) T13. Plain postcard. F.
66. Halibut Cove (10/11/61) 4BC & DCC. A Rural Station of Homer. VF.
67. Hawk Inlet (6/25/58) T4, swollen, DPO. F.
68. Haycock (9/23/49) T2, DPO. PMS. F. R = \$1.50.
69. Healy Fork (8/21/53) T3, DPO. Plain postcard. F. R = \$2.00.
70. Hogatza (4/20/57) T1, DPO. First day of operation cancel, PMS. VF. R = \$2.25.
71. Holikachuk (6/20/58) T1, DPO. F.
72. Homer (4/7/41) T5. Nonphilatelic. F. R = \$1.50.
73. Hood Bay (8/1/52) T2, DPO. First day of operation cancel for re-opened Post Office. Plain postcard. F. R = \$2.00.
74. Hood Bay (11/29/57) T2, DPO. Last day of operation cancel. F. R = \$2.00.
75. Hooper Bay (7/16/58) T1. F.
76. Hot Springs 1952 Retail Liquor Dealer Tax Stamp for the Northern Commercial Co. F. R = \$12.50.
77. Hughes (6/11/58) T2. PMS. VG.
78. Huslia (3/19/58) T1. F.
79. Igiugig (9/16/53) T1, DPO. Plain postcard. F. R = \$1.75.
80. Igloo (2/3/48) T2, DPO. Plain postcard. F. R = \$1.75.
81. Iliamna (9/7/41) T3. Nonphilatelic. F. R = \$1.50.
82. Iliamna (6/20/58) T4. F+.
83. Juneau (9/6/1898) T10 on registry receipt card. VG. R = \$18.50.
84. Juneau (7/3/1899) T11. F. R = \$19.50.
85. Juneau (2/7/02) T13 to Nome (4/10/02) "Rec'd.". VG-F. R = \$12.00.
86. Juneau (11/12/37) FD cancel & Mt. McKinley cachet, block of 4 Alaska Stamps, Scott # 800. F. R = \$3.50.
87. Juneau (1/2/59) T32. Special Arctic Military Philatelic Society map cachet for "Last Day as a Territory" cancel. C-10 sized envelope. VF. R = \$2.75.
88. Juneau (4/24/65) 4BC. Special PANEX VI cachet. VF. R = \$2.00.
89. Kake (6/19/58) T8. F.
90. Kalskag (11/18/32) T1. Postmaster signed cover noting first day of operation (one day earlier than noted in Helbock). VF. R = \$7.50.



Lot 90

91. Kaltag (6/30/58) T4, slight ink bleeding. F.
92. Karluk (10/17/85) 4BC & DCC, PMS. F-VF.
93. Kassan (11/20/54) T7, DPO. Airmail, C-10 sized envelope. VG.

94. Kenai (12/6/34) T7. PMS, EAMC -- Anchorage 12/16/34) T13, BS. F. R = \$4.50.



Lot 94

95. Ketchikan (6/22/40) T13. Special First Flight cachet to Seattle. F. R = \$2.00.
96. Ketchikan (5/8/43) T13. Crosby cachet, Monda & Child. Sitka. F. R = \$7.50.
97. Ketchikan (5/30/58) T18. "All American City" cancel & cachet. VF. R = \$2.50.
98. Kiana (6/26/58) T5. F.
99. King Cove (6/24/58) T3. F.
100. Kivalina (6/22/53) T1. Plain postcard. VF.
101. Kobuk (6/22/53) T2. Plain postcard. F+.
102. Kodiak (5/24/37) T6, slightly later than listed. Nonphilatelic. F. R = \$3.00.
103. Kokrines (10/17/53) T4, DPO. Plain postcard. F. R = \$1.75.
104. Kotzebue (8/3/42) T8 & Point Hope (8/5/42) T1 as BS on Censored cover sent to New York. F. R = \$6.50.

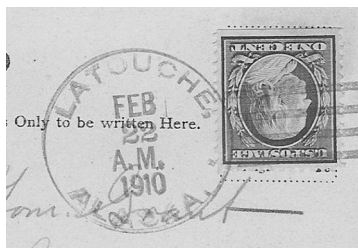


Lot 104

105. Kotzebue (6/25/58) T12. F.
106. Kotzebue (5/17/61) 4BC. Special "Project Chariot" cachet. VF. R = \$1.25.
107. Kotzebue (5/19/67) 4BC. FF (Jet) cachet; Anchorage (5/19/67) MC, BS. VF.
108. Koyuk (6/20/53) T1. Plain postcard. F.
109. Kwethluk (6/26/58) T1. F.
110. Kwethluk (1/5/59) 4BC. Early statehood usage, Gov. PC. F.
111. Kwiguk (12/6/54) T3, DPO. Off cover on block of 4 of the 15-cent gray President Buchanan stamps, Scott #820. F. R = \$2.50.
112. Lake Minchumina (3/25/55) T2. Nonphilatelic. F.
113. Larsen Bay (1/2/5"6") T1. Likely should be "59" and thus a last day as territory cancel. Gov PC. F.
114. Lassen (2/21/40) T1, DPO. Registry receipt card. F+. R = \$7.50.

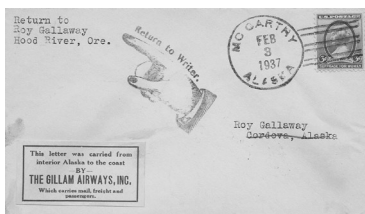


115. Latouche (2/22/10) T2, DPO. Great dog sled postcard. F+. R = \$62.50.



**Lot 115**

116. Levelock (6/26/58) T3, swollen. F.  
 117. Levelock (3/18/86) 4BC & DCC, PMS. F.  
 118. Livengood (10/4/53) T5, DPO. Plain postcard. F+. R = \$1.75.  
 119. McCarthy (2/3/37) T2, DPO. Via Gilliam Airways (sticker on cover) to Cordova (2/6/37) T6 BS. F+. R = \$5.50.



**Lot 119**

120. Manly Hot Springs (10/23/58) T2. Government postal card. F+.  
 121. Manokotak (4/1/60) 4BC. PMS, last day of PO operation. VF. R = \$1.50.  
 122. Metlakatla (6/24/58) T6. F.  
 123. Miller House (10/12/53) T3, DPO. Plain postcard. F. R = \$1.25.  
 124. Minto (10/9/58) T1. PMS. F.  
 125. Mount Edgecumbe (6/24/58) T2, DPO. F.  
 126. Mountain Village (8/6/57) T2. Nonphilatelic. F.  
 127. Naknek (5/25/17) T1. Great real photo postcard of the sailing ship "Bark Star of Zealand". F+. R = \$67.50.



**Lot 127**

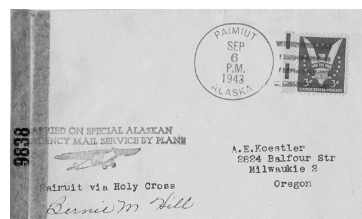
128. Napakiak (5/1/61) 4BC. Great totem/map cachet, FD of re-established PO. F.  
 129. Napamute (3/22/58) T3 (slight ink bleeding), DPO. Hand-drawn Tobin cachet of man wondering "where is Napamute"? F. R = \$3.25.

130. New Knock Hock (9/1/50) T1, DPO. Boy Scout stamp franking. F. R = \$4.50.  
 131. Nightmute (9/1/52) T1, DPO, PMS, FD of PO operation. F. R = \$2.25.  
 132. Nikolski (4/7/58) T1. Nonphilatelic. F.  
 133. Noatak (10/18/48) T1. Lebanon PA Stamp Club cachet. F.  
 134. Noatak (4/18/55) T3. Nonphilatelic. F.  
 135. Nome (9/5/60) MC. 1st Polar Transit, S.S. Sea Dragon cachet. F. R = \$1.50.  
 136. Nome (4/27/87) 4BC, DCC & Special "Office of the Postmaster" cancel, PMS. VF. R = \$1.50.



**Lot 136**

137. Nondalton (1/23/59) 4BC. Early statehood use, Gov PC. F.  
 138. Northway (10/22/53) T2, swollen. Plain postcard. F.  
 139. Nulato (9/17/53) T7. Nonphilatelic. VF. R = \$1.50.  
 140. Nunapitchuk (3/16/50) T1. PMS, FD of operation cancel. F.  
 141. Nushagak (6/27/14) T2, later than listed. Swedish PC. VG ("Nu" light). R = \$55.00.  
 142. Nyac (10/23/53) TT3, DPO. Plain postcard. VF. R = \$1.25.  
 143. Ophir (1/3/37) T3. DPO. Sign by PAA pilot Knox. VF. R = \$10.00.  
 144. Ouzinkie (5/7/47) T2. Nonphilatelic. F.  
 145. Pamiut (9/6/43) T1, DPO. EAMC cachet AND censored! VF. R = \$6.50.



**Lot 145**

146. Palmer (1/13/40) T3. Nonphilatelic.  
 147. Palmer (6/27/89) 4BC & DCC. PMS. VF.  
 148. Palmer, Colony Village Station. Special State Fair cancel & cachet. VF.  
 149. Pauloff Harbor (7/7/58) T3, later than listed, DPO. F+. R = \$1.25.  
 150. Pedro Bay (2/10/38) T1, DPO -- Anchorage (2/18/38) T8 BS. F. R = \$3.25.

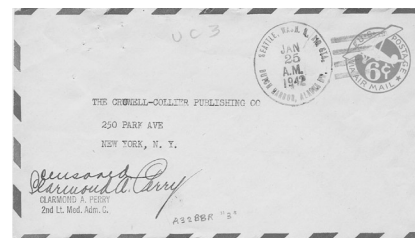


151. Pedro Bay (12/10/53) T2, DPO. Plain postcard. F. R = \$1.25.
152. Perryville (11/11/53) T3. Plain postcard. F.
153. Petersburg (7/17/89) 4BC & DCC. PMS. VF.
154. Pilot Station (3/21/51) T2. VF.
155. Platinum (10/24/53) T3. Plain postcard. F.
156. Point Baker (11/2/53) T1. Plain postcard. F.
157. Point Hope (6/25/58) T3. F.
158. Point Lay (7/2/58) T1, DPO. F. R = \$1.25.
159. Poorman (6/16/34) T2, DPO – Ruby (6/18/34) T2. PMS from both PO's! Likely an unmarked EAMC. F. R = \$4.00.
160. Port Alexander (8/15/29) T1, DPO. Washington, DC PC. VG, date clear but ("dria") missing. R = \$4.50.
161. Port Ashton (10/14/52) T1, DPO. Plain postcard. F+. R = \$1.25.
162. Port Graham (12/27/54) T1, DPO. Nonphilatelic. F. R = \$1.50.
163. Portland, Oregon (10/1/51) FF cachet to Anchorage (10/1/51) T13. BS. F.
164. 1980 Prudhoe Bay (2/28/80) special ARCO cancel. Special cachet for the Oil Pipeline. Letter enclosed from the cachet maker Paul, Mills. Most unusual; has a drop of Prudhoe Bay oil on the backside! VF. R = \$7.50.



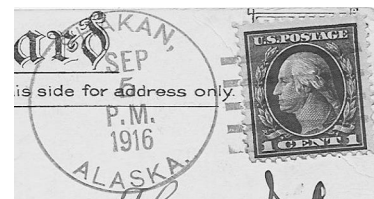
Lot 164

165. Quinhagak (6/24/58) T3. F.
166. Rampart (7/22/58) T8, DPO. VG-F.
167. Ruby (12/12/58) T5. F.
168. Saint Marys (3/20/58) T1. Nonphilatelic. F+.
169. Saint Michael (7/4/58) T14. Nonphilatelic. F+.
170. Saint Paul Island (12/1/55) T1. Nonphilatelic. F.
171. Saint Terese (11/11/42) T1, DPO. Hand-drawn cachet of a Native. F. R = \$4.50.
172. Sanak (10/31/53) T2, DPO. Plain postcard. F. R = \$1.75.
173. Savoonga (12/15/58) T3. Marked "Carried by Dog Sled Mail". F. R = \$2.00.
174. Seattle – Naval Air Station, Dutch Harbor Br. (1/25/42) T1. Hand-written & signed. Censored. F. R = \$12.50.
175. Seattle (Air Sta.) Kodiak, Alaska Br. (9/2/41) T1. Patriotic cachet. F. R = \$4.50.
176. Seattle & Seward RMS (10/22/32) double 3-bar cancel. F. R = \$4.50.



Lot 174

177. Seattle & Seward RMS (7/7/34/North) S.S. Yukon cachet. F. R = \$4.50.
178. Seattle & Seward RMS (2/20/35/North) Signed cachet S.S. Northwestern. F. R = \$5.00.
179. Seattle & Seward RMS (2/15/36/South). Great S.S. Alaska ship/totem/airplane cachet on Gov PC. F. R = \$4.00.
180. Seattle & Seward RMS (5/6/39/North) Great S.S. Yukon cachet. F. R = \$5.00.
181. Seattle & Seward RMS (7/26/39/North) S.S. Mount McKinley cachet on plain postcard. F. R = \$5.00
182. Seattle & Skagway RMS (8/6/39/South) S.S. Alaska cachet. F. R = \$5.00.
183. Seldovia (4/17/89) 4BC & DCC, PMS. VF.
184. Seward & Unalaska RPO (7/15/34/West) SS Star in cancel. F. R = \$5.00.
185. Seward & Unalaska RPO (9/5/37/West) SS Stat in cancel. Also a Unalaska (10/1/37) T12. F. R = \$5.00.
186. Shageluk (11/20/53) T2. Plain postcard.
187. Shakan (9/5/16) T4, DPO. Great Wrangell Narrows PC. F. R = \$57.50.



Lot 187

188. Shaktoolik (6/25/58) T4. F.
189. Shaktoolik (3/17/89) 4BC & DCC, PMS. VF.
190. Shungnak (7/3/53) T4. Plain postcard. F.
191. Shungnak (6/23/58) T5. F.
192. Skwentna (11/18/53) T1. Plain postcard. F+.
193. Sleetmute (11/16/53) T1, purple ink. Plain postcard. VF.
194. Sleetmute (12/26/67) 4BC. PMS. F.
195. Solomom (6/24/53) T4, purple ink, DPO. Plain postcard. F. R = \$1.50.
196. South Naknek (11/17/53) T3. Plain postcard. VF.
197. Stebbins (3/3/59) 4BC. PMS, hand-drawn Tobin cachet of a Sourdough. F. R = \$3.50.
198. Sterling (6/2/58) T2. VF.
199. Stevens Village (12/6/58) T1. VF.

200. Stony River (11/15/53) T2, DPO. Plain postcard. F. R = \$1.25.
201. Stony River (11/4/65) 4BC. Gov. PC. F.
202. Sulzer (10/24/08) T1, DPO. Totem PC. VG, date weak. R = \$50.00.
203. Sumdum (3/23/01) T1 on registry receipt with a 3/25/01 Juneau, Alaska "Rec'd." cancel and a Sutter Creek California cancel. VG-F ("um" missing). R = \$50.00.
204. Sutton (6/20/58) T1. F.
205. Talkeetna (6/23/5) T3. F.
206. Tanana (12/17/09) T3. Great Fort Gibbon cabin PC. F. R = \$35.00.
207. Tanana (10/15/47) T8 Dog Sled cachet to Hot Springs (10/28/47) T3 BS, DPO. F. R = \$4.00.
208. Tanacross (8/17/51) T1, DPO. Gov. PC. VF.
209. Tatitlek (1/14/54) T1. Plain postcard. VF.
210. Teller (2/14/59) 4BC. PMS & Hand-drawn Tobin cachet of a Sourdough. F. R = \$3.50.

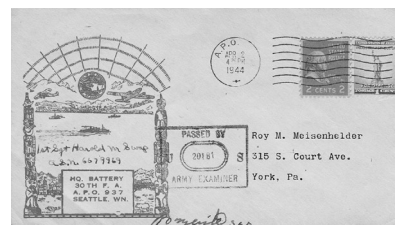
**Lot 210**

211. Tenakee Springs (1/2/59) T2. LD as Territory cancel; Gov PC. VG-F.
212. Togiak (5/12/59) 4BC FD of PO, Alaska statehood stamp franking. F.

**Lot 212**

213. Tok (12/23/58) T1. F.
214. Tok (1/3/59) 4BC. First Day of Statehood cancel. Gov. PC. F.
215. Tok, Border Rur. Br. (3/19/75) 4BC. VF.
216. Tok Junction (1/3/51) T1, DPO. Nonphilatelic Gov. PC. F. R = \$2.00.
217. Tolovana (5/1/49) T4, DPO. Gov. PC. F. R = \$1.75.
218. Treadwell (8/4/08) T1, DPO. Floral PC. VG-F. R = \$11.50.
219. Tuluksak (8/6/62) 4BC. Nonphilatelic. F.
220. Tununak (7/1/58) T2. F.
221. Tyonek (10/21/57) T4. Nonphilatelic. F.
222. Ugashik (1/18/44) T2, DPO. EAMC cachet & Censored. F. R = \$5.00.
223. Unalakleet (11/10/30) T2. VG. R = \$3.50.
224. Unalakleet (7/2/57) T6. F.

225. Unalaska (12/2/29) T7. F. R = \$7.25.
226. Unga (6/27/58) T4, swollen. VG.
227. Uyak (3/8/11) T2, DPO. F, corner pull lower right. R = \$55.00.
228. Valdez (4/17/51) T17, purple ink, later than listed. Airmail Gov. PC. F. R = \$1.50.
229. Venetie (3/16/52) T2, first date of use listed. F.
230. Wainwright (4/1/36) T1. EAMC cachet. F. R = \$3.25.
231. Wainwright (1/22/42) T2, purple ink, earlier than listed. Dog team mail; Alaska stamp (Scott # 800) franking. F. R = \$5.00.
232. Wainwright (8/18/49) T1. Great airplane cachet. F. R = \$2.25.
233. Wales (6/25/58) T4, swollen, later than listed. F. R = \$1.25.
234. Wales (1/3/59) 4BC, like T3. 1<sup>st</sup> day of statehood cancel; Gov. PC. F.
235. Wasilla (1/24/55) T6, earlier than listed. Nonphilatelic. F. R = \$1.50.
236. Wasilla, Big Lake CPO (11/13/84) 4BC, no bars; purple ink. PO Penalty Env. F.
237. White Mountain (1/8/59) 4BC, like T1. Early statehood use. Gov PC. F.
238. Windham (3/10/49) T3, DPO. Plain postcard. F. R = \$2.00.
239. Wrangell (5/24/43) T9. EAMC cachet, Censored. VG-F. R = \$3.75.
240. Yakutat (10/19/54) T8. Airmail Gov. PC, nonphilatelic. F. R = \$1.50.
241. APO 729 (12/5/44) 4BC. {Shemya Island} Airmail envelope. F. R = \$2.50.
242. APO 937 {Kodiak} (4/2/44) MC. Great cachet with APO #, Censored. F. R = \$6.00.

**Lot 242**

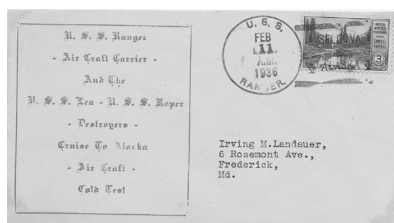
**Please Use the Bid  
Sheet on Page 103!**  
(it helps our auction manager)

243. APO 942 {Ft. Richardson} (10/31/44) 4BC. Real photo PC of bear cubs up a tree. F. R = \$3.00.
244. APO 976{Northway} (6/28/45) 4BC. Free Frank. F. R = \$4.50.
245. US Navy (8/22/43) 51<sup>st</sup> Naval Construction Battalion {Dutch Harbor} Censored. F. R = \$5.00.



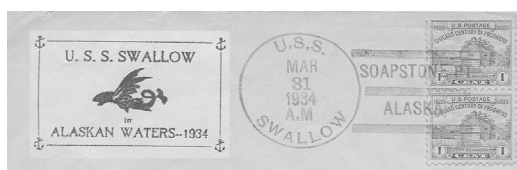
Lot 245

246. US Navy (8/25/43) 8<sup>th</sup> Special Battalion {Dutch Harbor} Censored. F. R = \$5.00.
247. USS Burton Island (8/2/49) 4BC Point Barrow re-supply cachet. F. R = \$1.50.
248. USS Burton Island {Seattle 11/8/66 MC) Arctic Exploration cachet. F.
249. USCG Cutter Northwind (6/6/63) 4bar, blue ink. Bearing Sea Patrol cachet. F.
250. USS Ranger (2/11/36) 3BC @ Seldovia. Great Alaska cruise cachet. F. R = \$5.00.



Lot 250

251. USS Roper (1/25/36) 3BC @ "Kacimak"?, Alaska. Great Alaska cruise cachet. F. R = \$5.00.
252. USS Roper (2/7/36) 3BC @ Seldovia, Alaska. Great Alaska cruise cachet. F. R = \$5.00.
253. USS Swallow (3/31/34) 3BC @ Soapstone Point, Alaska. Alaska waters cruise cachet. F. R = \$6.00.



Lot 253

254. USS Tanager ((8/23/34) 3BC @ Great Sitkin, Aleutian Is. F. R = \$4.00..
255. Unused 1940's-50's fold out color postcard (18 scenes) of Alaska. F. R = \$3.00.
256. Mint block of 4 of the 2-cent red Alaska-Yukon Exposition

stamp, Scott #370. 2 stamps never-hinged, 2 light hinged. F. R = \$12.75.

257. 1984 – 1994, eleven covers for each year's Yukon Quest Sled Dog Race. Alternating years are postmarked in Fairbanks and Whitehorse. F. R = \$12.50.
258. 46 different small town, mainly 4BC postmarks on cover from the 1960's and 1970's. F. R = \$8.50.

## "Gold Nugget"

### Getting to the Gold

*"Gold fever" struck people across the United States and around the world. While promoters in both Vancouver, British Columbia and Tacoma, Washington hoped to lure northern-bound stampedeers, it was Seattle, Washington which was the most successful at promoting itself as the best departure point for the Klondike. Within days, the city was flooded with stampedeers. Ships bound for Alaska were grossly over-booked. Leaky, outdated vessels were pushed into service, taking on as many prospectors as could be crammed aboard.*

*Of the thousands clamoring to get to the Klondike, few really understood how difficult the journey would be. Most knew better than the man from Chicago who asked a Seattle station attendant for directions to the train to Skagway, which was hundreds of miles away and accessible only by boat.*

*Skagway, Alaska was one of a number of "jumping off" points for the Klondike. Those who sought advice on the best route to choose were overwhelmed by the dozens of articles, books, guides, maps and pamphlets that flooded the market. Clarity turned to chaos as publishers desperate to cash in on the rush hurried to print using rumors and guesswork instead of reliable information.*

# BID LIST

All bids must be postmarked by February 29, 2004. If you need more space for bids, please copy this form. Remember, all reserves are just \$1.75 unless otherwise noted in the specific auction listing.

LOT NO.	BID AMOUNT	AUCTION MANAGER USE ONLY

**PRINT CLEARLY: THIS IS YOUR  
MAILING LABEL FOR LOTS WON**

Name: \_\_\_\_\_

Address: \_\_\_\_\_

City/State/ZIP: \_\_\_\_\_

Send this completed bid form to:  
Terry Shaw, ACC Auction Manager  
Unit #1009, The Letterman Building  
2030 "F" St., NW • Washington, DC, 20006